

# Tohpe Corporation

## Company Profile

### Business Description

Manufacture and sales of paints, functional coatings, road marking materials, guidance marking materials for people with visual impairments, and chemicals.

We were established as Toa Paint K.K. in 1915. We became a member of the Zeon Group in 2013. We manufacture and sell various types of paint, and operate a chemicals business based on acrylic rubber. We are participating in a project to manufacture powder paint in Vietnam, and are supplying stable quantities of products to the domestic market. We also constructed a plant in Thailand to manufacture functional coatings, and operations began in FY2019.



Tohpe Head Office

### No. of Employees

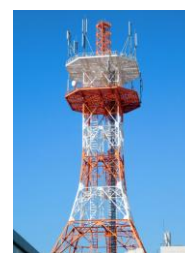
As of March 31, 2021: 313 (262 men, 51 women)

Hiring in FY2020: 3 (3 men, 0 woman)

Product image



Pedestrian crossing with guidance markings for people with visual impairments



Weak solvent fluorocarbon polymer coating system that reduces the number of steps required

## Company Policy (Executive Message)

In order to respond effectively to market needs and customer expectations, we will continue to take on the challenge of building a new future by coming together as “One Tohpe,” with effective inter-departmental coordination

### Policy

Transform Tohpe through “ONE TOHPE + ONE”

1. Transform sales
2. Transform production
3. Transform R&D
4. Transform management and administration
5. Transform how all employees act



President  
Yoshiyuki Mitsuhiro

## Safety Initiatives

### Policy

Promote activities to prevent incidents and accidents from occurring, and build systems to ensure compliance.

### Specific Initiatives

- Implement countermeasures with respect to identified risks by promoting near-miss incident analysis and risk assessment at all plants
- Promote activities to enhance hazard awareness at all plants, using 4R-KY and S-KY
- Aim to strengthen compliance by adjusting rules and implementing monitoring
- Implement horizontal deployment of the Zeon Group’s industrial accident countermeasures
- Implement COVID-19 countermeasures

## Environmental Impact Reductions

### Policy

- Reduce the amount of waste sent to landfills
- Reduce atmospheric emissions of organic solvents
- Reduce electricity consumption intensity

### Specific Initiatives

1. Reduce waste sent to landfills for final disposal  
Reduce production losses, reduce inventory by shifting over to smaller lots, and reduce waste products
2. Reduce atmospheric emissions of organic solvents  
Develop environmentally friendly paints
3. Routine environmental countermeasures  
Eco-cap campaign, recycling activities, greening campaign (green curtains)



Greening campaign for plant grounds by growing "green curtains" led by the MD Committee

### Environmental Data

Tohpe Corporation		FY2016	FY2017	FY2018	FY2019	FY2020
Substances subject to the PRTR Act	No. of substances	23	24	25	23	22
	Consumption (tons)	7,517	7,881	6,888	6,284	5,018
	Emissions (tons)	116.5	78.3	71.0	54.0	56.1
Industrial waste	Amount generated before compacting (tons)	2,262	1,864	1,978	1,635	1,379
	Amount sent to landfills (tons)	136	65.6	69.6	48.4	74.2
Water resource consumption (1,000 m <sup>3</sup> ) (industrial water + groundwater + waterworks)		184.2	187.2	190.1	174.7	151.5
CO <sub>2</sub> emissions (tons)		9,508	9,352	8,284	7,468	7,494
Energy consumption (crude oil equivalent, kL)		4,079	3,975	3,630	3,441	3,497

## Relationship with Employees

### Policy

Develop employees to take action and effect change while thinking for themselves.

### Specific Initiatives

- QC circle activities
- MD activities
- Taimatsu (Torchlight) activities
- Encouraging employees to undertake training and distance learning, and providing support to help employees acquire qualifications



Improvement activities led by the MD Committee and Taimatsu (Torchlight)

## Relationship with the Local Community

### Specific Initiatives

(Activities marked with an asterisk (\*) were not held in FY2020 due to the impact of the COVID-19 pandemic)

#### 1. Blood donations

We conduct annual blood donation campaigns at the head office\* and Mie and Ibaraki\* plants.



Blood-donation activity

#### 2. Disaster risk reduction\*

Employees at the Ibaraki and Kyushu plants participate in firefighting drill competitions organized by local fire departments every fall.



Neighborhood clean-up activities

#### 3. Community beautification activities

Employees at Mie Plant participate in community cleanups once a year and conduct cleanups in the area around the plant.

Employees at Ibaraki Plant participate in cleanup activities following local fireworks displays.\*

The Kurashiki Plant conduct cleanups in the area around the plant.

#### 4. Events that families can participate in

We conduct family plant tours at the Ibaraki and Kurashiki Plants.\*

(At the Ibaraki Plant, although the family plant tours have been put on hold, experiment kits have been provided which families can enjoy using at home)



Experiment kit

#### 5. Fieldwork activities for local high schools

The Mie Plant implements fieldwork activities for local high schools.