

***ZEON's
AROMA
CHEMICALS***



ZEON

INTRODUCTION

OUTLINE OF ZEON CORPORATION

Zeon Corporation established in 1950, is a manufacturer of polyvinylchloride, synthetic rubbers and latices, chemical products and polymer fabricated products in Japan.

It is well known to the petrochemical industry that Zeon Corporation has developed unique extractive distillation processes using C₄ and C₅ fractions of naphtha to produce high purity butadiene and isoprene, both of which are the basic raw materials for synthetic rubbers.

From the early 1980's Zeon Corporation has diversified into many new areas including specialty chemicals, electronic chemicals and medical products.

SPECIALTY CHEMICALS AND “EMOSCENT”

Zeon Corporation's Specialty Materials Division utilizes C₅ fractions from naphtha to produce its specialty chemicals.

These chemicals are crucial in flavors, fragrances, intermediates used in pharmaceutical & agricultural materials, and other various chemicals for industrial use.

As a market leader in the aroma chemical field, Zeon Corporation is well known for its Green Notes: Leaf alcohol and Leaf esters, Jasmine Notes: Methyl dihydrojasmonate and Methyl jasmonate, and Lactone Notes.

By creating such products, Zeon Corporation is playing a significant role in the scents we come across daily.

“EMOSCENT” is the brand name for Zeon Corporation aroma products. Under this brand, we will serve you with enriched lines of aroma chemicals. Based on the combination of abundantly available in-house raw materials and the high-level technologies of organic syntheses, we have been developing various kinds of fine chemicals. At Zeon Corporation we are constantly striving to develop new aroma chemicals.



DESCRIPTION OF ZEON's AROMA CHEMICALS

INDEX



- 24 ■ CLAIGEON™
- 26 ■ CEPIONATE™
- 28 ■ Jasminlactone
- 30 ■ JASMONEIGE™
- 32 ■ ZEPPIN™
- 34 ■ cis-Jasmon



- 8 ■ cis-3-Hexenol(Leaf alcohol)
- 10 ■ cis-3-Hexenyl acetate
- 12 ■ cis-3-Hexenyl salicylate
- 14 ■ cis-3-Hexenal
- 16 ■ Leaf acetal
- 18 ■ 3,6-Nonadienol
- 20 ■ cis-6-Nonenol



- 38 ■ delta-Decalactone
- 39 ■ delta-Undecalactone
- 39 ■ delta-Dodecalactone
- 40 ■ delta-Decalactone R-80

AROMA CHEMICALS DATA

- 42 ■ GREEN NOTES
- 44 ■ JASMINE NOTES
- 44 ■ OTHER NOTES
- 46 ■ FOR MORE INFORMATION





As representative Green Notes of aroma chemicals, cis-3-Hexenol (Leaf alcohol) and Leaf esters play important roles in various kinds of fragrances and flavors. Zeon Corporation is a world market leader in the Green Notes field and has successfully developed new products such as 3,6-Nonadienol, cis-3-Hexenal and cis-6-Nonenol.

ZEON's AROMA CHEMICALS
EMOSCENT®

cis-3-Hexenol(Leaf alcohol)



cis-3-Hexenol is widely well-known as Leaf alcohol, and it is frequently used not only in floral green fragrances but also in fruity and mint flavors.

cis-3-Hexenol gives fresh and natural green effects to top notes.

ODOR	Fresh and Natural Green, Grassy, Powerful
APPEARANCE	Colorless to pale yellow liquid
NATURAL OCCURRENCE	Found in many flowers, fruits, herbs, and vegetables
USE	Used as a refreshing green top note in floral, fruity, herbal, minty flavor and fragrance compounds
TENACITY	1 day on a smelling blotter

PHYSICAL PROPERTIES

●Formula	C ₆ H ₁₂ O
●UN No.	1987
●Flash point	59°C ± 2°C (closed cup)

ANALYTICAL SPECIFICATIONS

●Purity (GC %)	min. 98.00%
●Specific gravity (d20/20)	0.845~0.851
●Refractive index (n20/D)	1.436~1.442
●Acid value (mg KOH/g)	max. 1.0

REGISTRATION

●TSCA, DSL, CHINA, ECL, AICS, PICCS	Listed
●EC No.	213-192-8
●FEMA	2563
●KOSHER	Certified

APPLICATION STABILITY	Stable in a wide range of applications such as alcoholic, cosmetic, toiletry and household products
STORAGE CONDITIONS	Containers should be kept in a dark cool place after purging air with nitrogen.

cis-3-Hexenyl acetate



cis-3-Hexenyl acetate is one of cis-3-Hexenol's popular esters, which is frequently used not only in floral green fragrance but also in fruity flavor to give fresh and sharp green fruity effects in compounds.

ODOR	Fruity, Green, Apple, Green banana-like
APPEARANCE	Colorless to pale yellow liquid
NATURAL OCCURRENCE	Found in Jasmine, various fruits including Apple, Guava and Passionfruit
USE	Used as a refreshing top note in floral, fruity, minty flavor and fragrance compounds
TENACITY	2~3 hours on a smelling blotter

PHYSICAL PROPERTIES

●Formula	C ₈ H ₁₄ O ₂
●UN No.	3272
●Flash point	57°C ± 2°C (closed cup)

ANALYTICAL SPECIFICATIONS

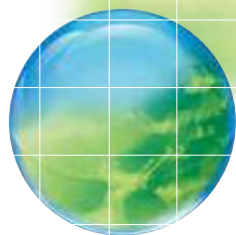
●Purity (GC %)	min. 98.00%
●Specific gravity (d ₂₀ /20)	0.898~0.904
●Refractive index (n ₂₀ /D)	1.424~1.430
●Acid value (mg KOH/g)	max. 2.0

REGISTRATION

●TSCA, DSL, CHINA, ECL, AICS, PICCS	Listed
●EC No.	222-960-1
●FEMA	3171
●KOSHER	Certified

APPLICATION STABILITY	Stable in a wide range of applications such as alcoholic, cosmetic, toiletry and household products
STORAGE CONDITIONS	Containers should be kept in a dark cool place after purging air with nitrogen.

cis-3-Hexenyl salicylate



cis-3-Hexenyl salicylate is one of cis-3-Hexenol's popular esters. This is an important item frequently used in fine fragrance, toiletries and household products. cis-3-Hexenyl salicylate produces green and floral effects in compounds.



ODOR	Floral, Green, Balsamic
APPEARANCE	Colorless to pale yellow liquid
NATURAL OCCURRENCE	Found in Lilium Longiflorum Thumb, Narcissus
USE	Used as floral green balsamic note in a wide range of applications
TENACITY	more than 2 weeks on a smelling blotter

PHYSICAL PROPERTIES

●Formula	C ₁₃ H ₁₆ O ₃
●UN No.	3082
●Flash point	156°C (open cup)

ANALYTICAL SPECIFICATIONS

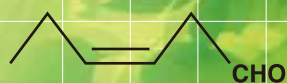
●Purity (GC %)	min. 97.00%
●Specific gravity (d20/20)	1.059~1.067
●Refractive index (n20/D)	1.518~1.525
●Acid value (mg KOH/g)	max. 2.0

REGISTRATION

●TSCA, DSL, CHINA, ECL, AICS, PICCS	Listed
●EC No.	265-745-8
●FEMA	4750

APPLICATION STABILITY	Stable in a wide range of applications such as alcoholic, cosmetic, toiletry and household products
STORAGE CONDITIONS	Containers should be kept in a dark cool place after purging air with nitrogen.

cis-3-Hexenal



cis-3-Hexenal offers the scent of tomato and various vegetables.

Zeon Corporation has successfully developed the commercial process of manufacturing this product.

ODOR	Very strong, Green Leafy, Tomato leaf-like
APPEARANCE	Colorless to light yellow
NATURAL OCCURRENCE	Found in Tomato, Peppermint, Guava, Navel and Valencia oranges
USE	Used as an original fresh natural green top note reminiscent of tomato leaf in a various kinds of flavors and fragrances
TENACITY	more than 1 week on a smelling blotter

PHYSICAL PROPERTIES

●Formula	C ₆ H ₁₀ O
●UN No.	1989
●Flash point	26°C (closed cup)

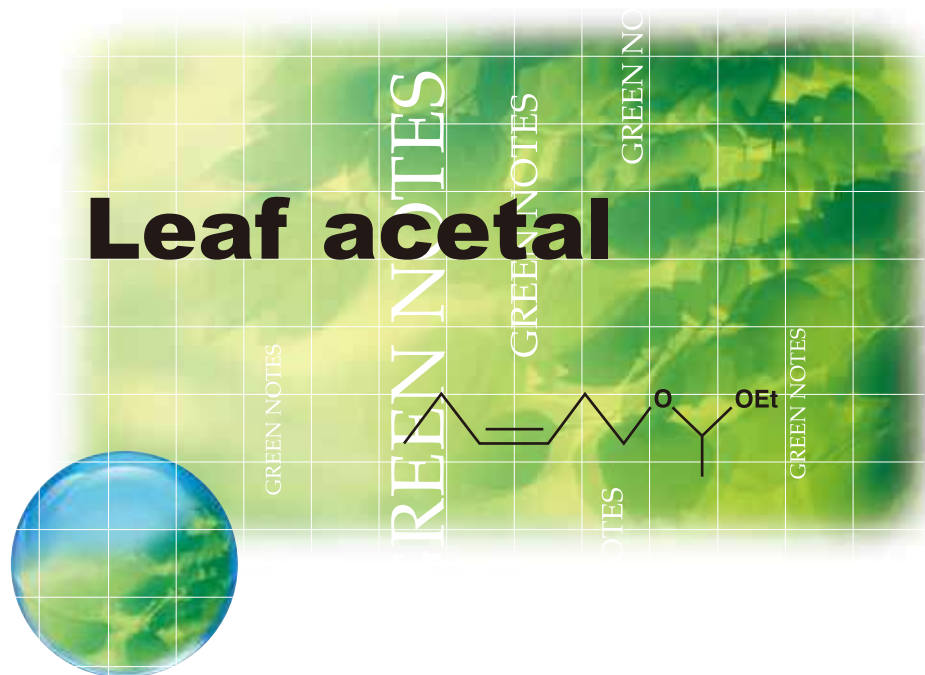
ANALYTICAL SPECIFICATIONS

●Purity (GC %)	min. 98.00%
----------------	-------------

REGISTRATION

●TSCA, DSL, CHINA, AICS, PICCS	Listed
●EC No.	229-854-4
●FEMA	2561

APPLICATION STABILITY	Stable in weak acid and basic applications.
STORAGE CONDITIONS	Store in freezer below -20°C. Purge air in the container with nitrogen. Store away from all heated source, including direct sunlight. Tanks should be grounded and provided with adequate pressure relief value. Storage in stainless steel or polyethylene recommended.



Acetaldehyde ethyl cis-3-hexenyl acetal, known as Leaf acetal, is used as fresh green top notes to give vegetable and fruity scents.

ODOR	Green-grassy, Violet like, Radish-like
APPEARANCE	Colorless to pale yellow liquid
NATURAL OCCURRENCE	Found in Guava and Plum
USE	Used as a natural green top note in floral green and citrus mossy fragrances and also in fruity flavors to give tropical fruits aspects
TENACITY	1 hours on a smelling blotter

PHYSICAL PROPERTIES

● Formula	C ₁₀ H ₂₀ O ₂
● Flash point	69.5°C (closed cup)

ANALYTICAL SPECIFICATIONS

● Purity (GC %)	min. 98.00%
● Specific gravity (d20/20)	0.849~0.859
● Refractive index (n20/D)	1.420~1.430
● Acid value (mg KOH/g)	max. 2.0

REGISTRATION

● TSCA, DSL, CHINA, AICS, PICCS	Listed
● EC No.	248-817-3
● FEMA	3775

APPLICATION STABILITY	Stable in neutral to weak basic pH applications such as alcoholic, cosmetic and toiletry products
STORAGE CONDITIONS	Containers should be kept in a dark cool place after purging air with nitrogen.

3,6-Nonadienol



3,6-Nonadienol offers the scent of freshly cut Cantaloupe, Honeydew and Watermelon. Zeon Corporation has successfully developed the commercial process of manufacturing this product, which has a wide use range in flavor and fragrance.

ODOR	Powerful, Natural, Fresh, Green, Violet leaf, Fruity, Vegetable
APPEARANCE	Colorless to pale yellow liquid
NATURAL OCCURRENCE	Found in Watermelon, Muskmelon and Cucumber
USE	Used in fruity and vegetable flavors as an essential component and also in various fragrances such as marine and ozone notes
TENACITY	2 days on a smelling blotter

PHYSICAL PROPERTIES

● Formula	C ₉ H ₁₆ O
● Flash point	104°C (open cup)

ANALYTICAL SPECIFICATIONS

● Purity (GC %)	min. 97.00%
● Specific gravity (d20/20)	0.867~0.875
● Refractive index (n20/D)	1.463~1.473
● Acid value (mg KOH/g)	max. 2.0

REGISTRATION

● TSCA, DSL, CHINA, ECL, AICS, PICCS	Listed
● EC No.	278-518-3
● FEMA	3885
● KOSHER	Certified

APPLICATION STABILITY	Stable in a wide range of applications such as alcoholic, cosmetic, toiletry and household products
STORAGE CONDITIONS	Containers should be kept in a dark cool place under 5°C after purging air with nitrogen.

cis-6-Nonenol



cis-6-Nonenol offers the scent of Watermelon, Muskmelon and Cucumber, which gives a watery green fresh top note to fruity flavors and also gives ozone and marine notes as a unique accent to aquatic fragrances.

ODOR	Powerful, Natural, Fresh, Fruity Green, Violet leaf, Ozone, Marine
APPEARANCE	Colorless to pale yellow liquid
NATURAL OCCURRENCE	Found in Watermelon, Muskmelon and Cucumber
USE	Used in fruity and vegetable flavors as an essential component and also in various fragrances as marine and ozone fruity notes as well as a violet green note
TENACITY	7 days on a smelling blotter

PHYSICAL PROPERTIES

● Formula	C ₉ H ₁₈ O
● Flash point	95°C (open cup)

ANALYTICAL SPECIFICATIONS

● Purity (GC %)	min. 95.00%
● Specific gravity (d₂₀/20)	0.846~0.854
● Refractive index (n₂₀/D)	1.444~1.456
● Acid value (mg KOH/g)	max. 2.0

REGISTRATION

● TSCA, DSL, CHINA, ECL, AICS, PICCS	Listed
● EC No.	252-764-1
● FEMA	3465
● KOSHER	Certified

APPLICATION STABILITY	Stable in a wide range of applications such as alcoholic, cosmetic, toiletry and household products
STORAGE CONDITIONS	Containers should be kept in a dark cool place under 5°C after purging air with nitrogen.



CLAIGEON™ (Methyl dihydrojasmonate) is an aroma chemical essential for today's fragrance compounds widely used in fine fragrance, cosmetics, toiletries and household products.

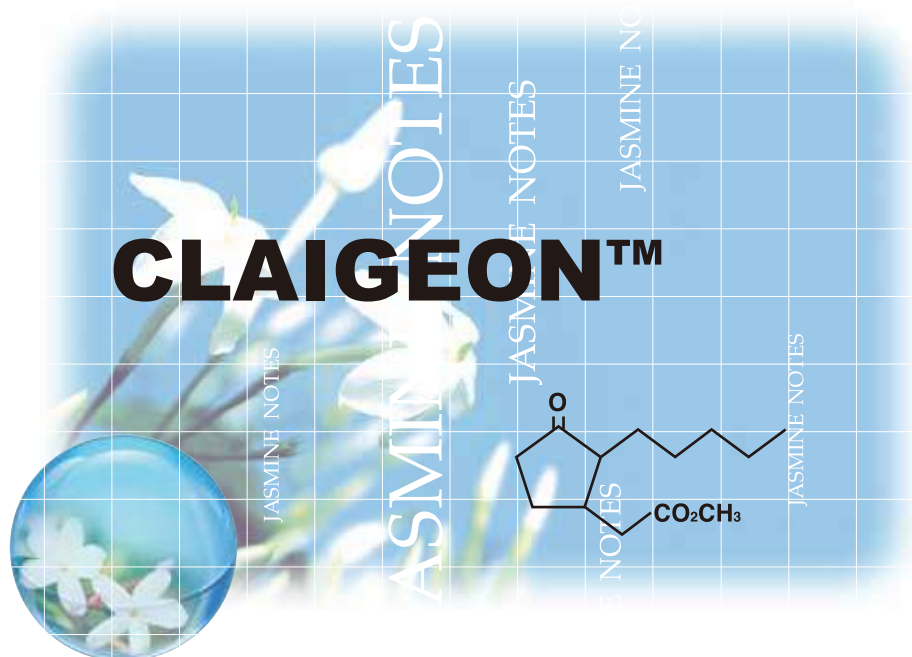
CEPIONATE™ (highly epimerized Methyl dihydrojasmonate) contains three times of epi-isomer(30~35%) compared to regular Methyl dihydrojasmonate.

Jasminlactone gives the highest quality of fruity lactone note to compounds.

JASMONEIGE™ (Methyl jasmonate) and ZEPPIN™ (highly epimerized Methyl jasmonate) are very popular for their distinctive effects in various applications.

ZEON's AROMA CHEMICALS

EMOSCENT®



CLAIGEON™ is Zeon Corporation's original brand for Methyl dihydrojasmonate, and has now become a major aroma chemical. With its wide range of uses, mainly in fragrances, it can be also used in flavors compounds with a nuance of citrus and tea flavor.

ODOR	Floral, Natural Jasmine-like
APPEARANCE	Colorless to pale yellow liquid
NATURAL OCCURRENCE	Found in Jasmine, Tea and Heliotropium
USE	Used in numerous types of fragrances to create a natural floral atmosphere as well as in citrus and tea flavors
TENACITY	more than 2 weeks on a smelling blotter

PHYSICAL PROPERTIES

● Formula	C ₁₃ H ₂₂ O ₃
● Flash point	160°C (open cup)

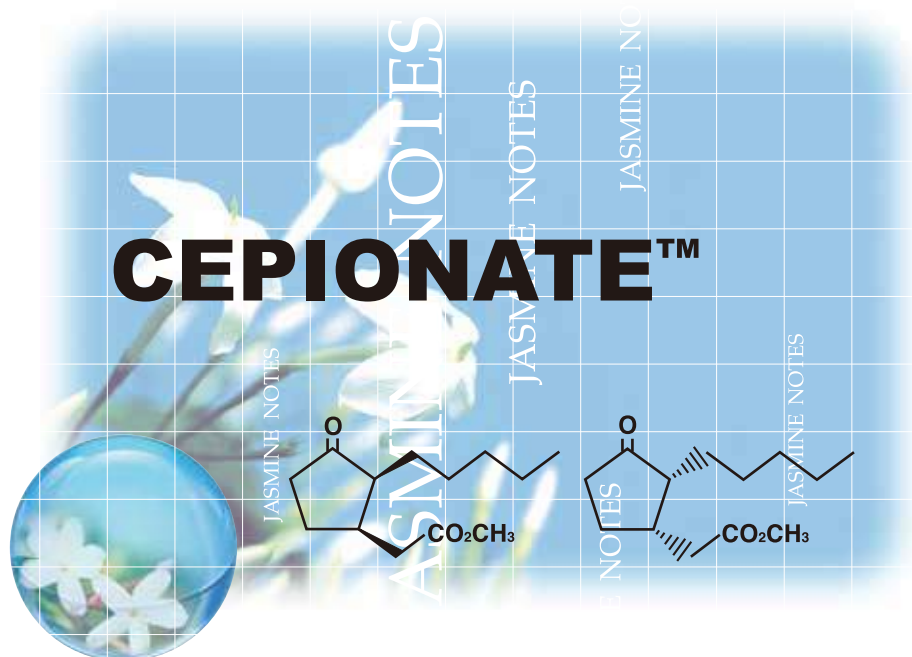
ANALYTICAL SPECIFICATIONS

● Purity (GC %)	min. 98.50%
● Specific gravity (d₂₀/20)	0.999~1.007
● Refractive index (n₂₀/D)	1.456~1.462
● Acid value (mg KOH/g)	max. 1.0

REGISTRATION

● TSCA, DSL, CHINA, ECL, AICS, PICCS	Listed
● EC No.	246-495-9
● FEMA	3408

APPLICATION STABILITY	Stable in a wide range of applications such as alcoholic, cosmetic, toiletry and household products
STORAGE CONDITIONS	Containers should be kept in a dark cool place after purging air with nitrogen.



CEPIONATE™ is highly epimerized Methyl dihydrojasmonate and has about three times more epi-isomer than one of **CLAIGEON™**. Methyl epi-dihydrojasmonate has a much stronger and richer odor than **CLAIGEON™**. **CEPIONATE™** has been more frequently used not only in fine fragrance and cosmetics, but also in toiletry products.

ODOR	Powerful, Floral, Sweet Tenacious, Slightly powdery, Diffusive, Natural Jasmine-like
APPEARANCE	Colorless to pale yellow liquid
NATURAL OCCURRENCE	Found in Jasmine, Tea and Heliotropium
USE	Used in numerous types of fragrances to create a natural sweet floral powdery atmosphere as well as in citrus and tea flavors
TENACITY	more than 2 weeks on a smelling blotter

PHYSICAL PROPERTIES

● Formula	C ₁₃ H ₂₂ O ₃
● Flash point	160°C (open cup)

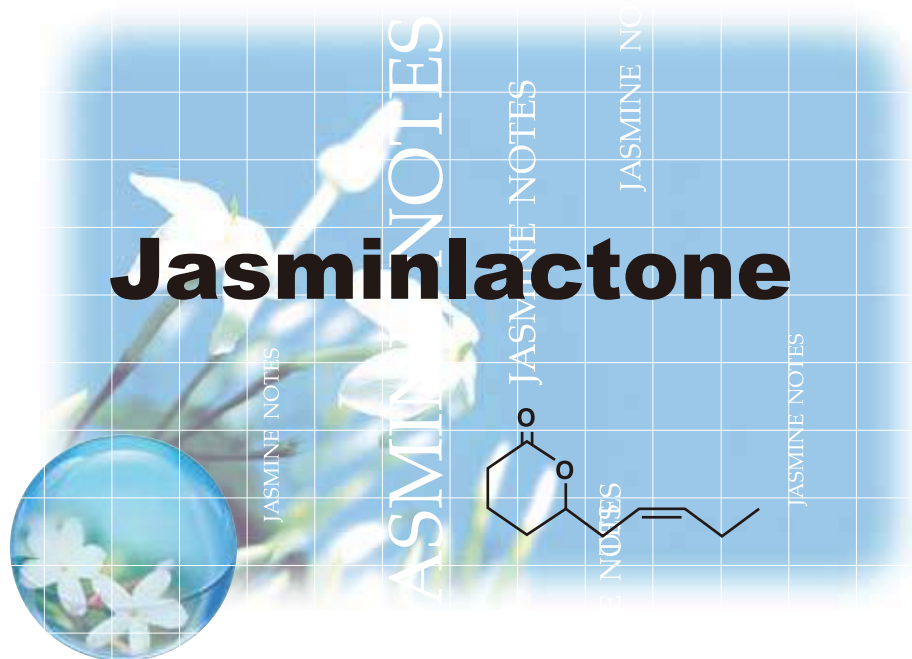
ANALYTICAL SPECIFICATIONS

● Purity (GC %)	min. 98.00%(containing epi-isomer 30.00~35.00%)
● Specific gravity (d20/20)	1.000~1.008
● Refractive index (n20/D)	1.456~1.462
● Acid value (mg KOH/g)	max. 2.0

REGISTRATION

● TSCA, DSL, CHINA, ECL, AICS, PICCS	Listed
● EC No.	246-495-9
● FEMA	3408

APPLICATION STABILITY	Stable in a neutral to weak acidic pH applications such as alcoholic, cosmetic products
RECOMMENDATION	<ul style="list-style-type: none"> ● Use in neutral or weak acidic applications ● Avoid using in strong acidic or basic applications ● Check stability in each final product.
STORAGE CONDITIONS	Containers should be kept in a dark cool place after purging air with nitrogen.



Jasminlactone is a nature identical substance existing in various flowers and fruits. Jasminlactone gives the highest quality of fruity lactone note to compounds. Zeon Corporation has successfully developed the commercial process of manufacturing this substance.

ODOR	Powerful, Very natural, Oily-fruity, Tenacious, White flower petals
APPEARANCE	Colorless to pale yellow liquid
NATURAL OCCURRENCE	Found in Jasmine, Gardenia, Honeysuckle, Tuberose, Ginger lily, Tea and Peach
USE	Used to create a soft, natural, elegant effect in white floral fragrances and to add natural characteristics and freshness to Peach, Apricot, Tea and Coconut flavors.
TENACITY	more than 2 weeks on a smelling blotter

PHYSICAL PROPERTIES

● Formula	C ₁₀ H ₁₆ O ₂
● Flash point	155°C (open cup)

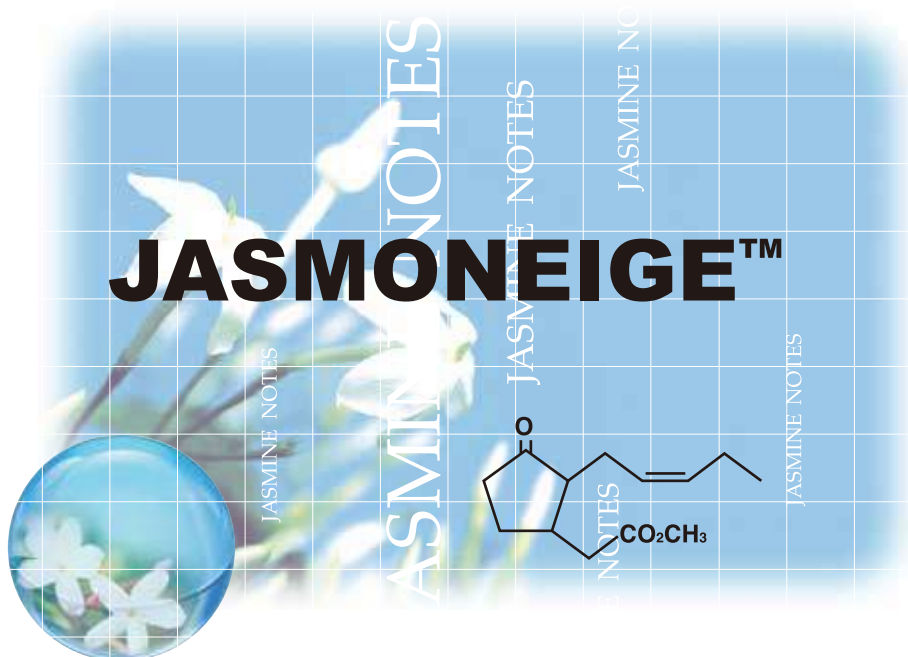
ANALYTICAL SPECIFICATIONS

● Purity (GC %)	min. 97.00%
● Specific gravity (d20/20)	0.995~1.007
● Refractive index (n20/D)	1.473~1.479
● Acid value (mg KOH/g)	max. 5.0

REGISTRATION

● TSCA, DSL, CHINA, ECL, AICS, PICCS	Listed
● EC No.	247-074-2
● FEMA	3745
● KOSHER	Certified

APPLICATION STABILITY	Stable in a wide range of applications such as alcoholic, cosmetic, toiletry and household products
STORAGE CONDITIONS	Containers should be kept in a dark cool place under 5°C after purging air with nitrogen.



JASMONEIGE™, Zeon Corporation's original brand for Methyl jasmonate, is a nature identical substance existing in Jasmine, which gives distinctive characteristics in various fragrances and flavor compounds.

ODOR	Powerful, Floral, Sweet, Elegant Reminiscent of Natural Jasmine petal
APPEARANCE	Colorless to pale yellow liquid
NATURAL OCCURRENCE	Found in Jasmine, Peppermint, Spearmint and Tea
USE	Used as a soft, elegant Jasmine-like note in both fragrance and flavor compounds to add richness and luxury and to create a long lasting, exciting effect; also used in various flavors
TENACITY	more than 2 weeks on a smelling blotter

PHYSICAL PROPERTIES

● Formula	C ₁₃ H ₂₀ O ₃
● Flash point	156°C (open cup)

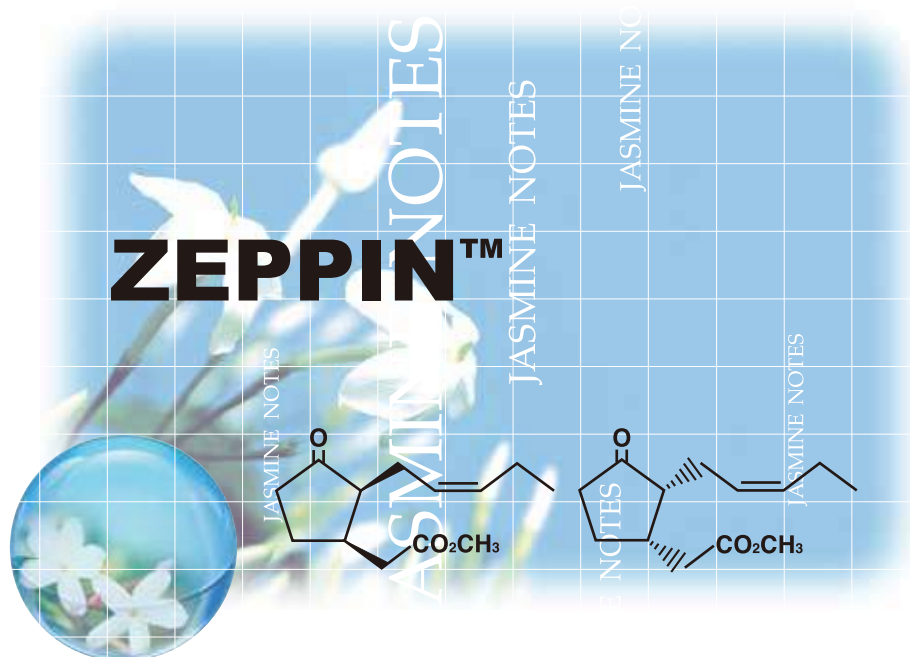
ANALYTICAL SPECIFICATIONS

● Purity (GC %)	min. 97.00%
● Specific gravity (d20/20)	1.018~1.029
● Refractive index (n20/D)	1.471~1.477
● Acid value (mg KOH/g)	max. 2.0

REGISTRATION

● TSCA, DSL, CHINA, ECL, AICS, PICCS	Listed
● EC No.	254-705-5
● FEMA	3410
● KOSHER	Certified

APPLICATION STABILITY	Stable in a wide range of applications such as alcoholic, cosmetic, toiletry and household products
STORAGE CONDITIONS	Containers should be kept in a dark cool place under 5°C after purging air with nitrogen.



ZEPPIN™ is highly epimerized Methyl jasmonate, which has about five times more epi-isomer than JASMONEIGE™. This allows even a small amount of **ZEPPIN™** in compounds to create significant effects and performance. The threshold of Methyl epi-jasmonate is less than one thousandth of that of the other isomer.

ODOR	Very natural, Diffusive, Floral, Sweet, Reminiscent of Natural Jasmine petal
APPEARANCE	Colorless to pale yellow liquid
NATURAL OCCURRENCE	Found in Jasmine, Peppermint, Spearmint and Tea
USE	Used in white floral fragrance such as Jasmine, Lily, Gardenia and Honeysuckle also useful for flavors such as Tea, Lemon and various kinds of fruits to add a noble and gorgeous scent
TENACITY	4 days on a smelling blotter

PHYSICAL PROPERTIES

● Formula	C ₁₃ H ₂₀ O ₃
● Flash point	156°C (open cup)

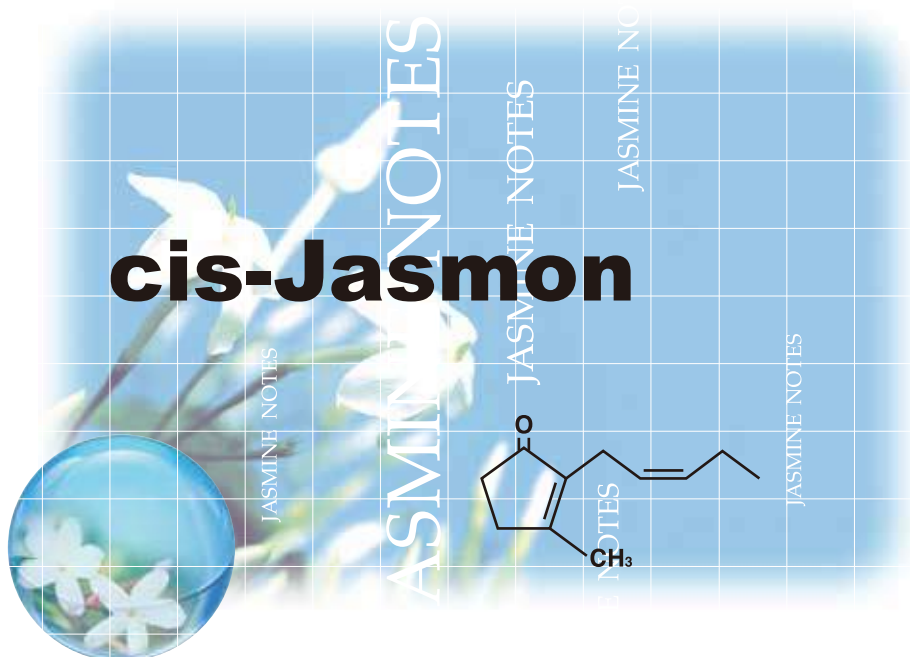
ANALYTICAL SPECIFICATIONS

● Purity (GC %)	min. 97.00%(containing epi-isomer 20.00%~23.00%)
● Specific gravity (d20/20)	1.018~1.029
● Refractive index (n20/D)	1.471~1.477
● Acid value (mg KOH/g)	max. 2.0

REGISTRATION

● TSCA, DSL, CHINA, ECL, AICS, PICCS	Listed
● EC No.	254-705-5
● FEMA	3410
● KOSHER	Certified

APPLICATION STABILITY	Stable in a neutral to weak acidic pH applications such as alcoholic, cosmetic products.
RECOMMENDATIONS	<ul style="list-style-type: none"> ● Use in neutral or weak acidic applications. ● Avoid using in strong acidic or basic applications. ● Check stability in each final product.
STORAGE CONDITIONS	Containers should be kept in a dark cool place under 5°C after purging air with nitrogen.



cis-Jasmon is a nature identical substance existing in mint, tea and various flowers. **cis-Jasmon** is widely used in floral fragrances to create natural flower note, also used in various flavors such as Jasmine tea, Strawberry, Pineapple and mint flavors.

ODOR	Diffusive, Fruity, Natural Jasmine-like, Celery seed-like
APPEARANCE	Colorless to pale yellow liquid
NATURAL OCCURRENCE	Found in Jasmine, Peppermint, Spearmint, Jonquil Bergamot and tea
USE	Used in floral fragrances and in fresh fruity flavors such as Strawberry, Pineapple, Tea and Mint types
TENACITY	7 days on a smelling blotter

PHYSICAL PROPERTIES

● Formula	C ₁₁ H ₁₆ O
● Flash point	127.5°C (open cup)

ANALYTICAL SPECIFICATIONS

● Purity (GC %)	min. 98.00%
● Specific gravity (d20/20)	0.940~0.946
● Refractive index (n20/D)	1.497~1.501
● Acid value (mg KOH/g)	max. 2.0

REGISTRATION

● TSCA, DSL, CHINA, ECL, AICS, PICCS	Listed
● EC No.	207-668-4
● FEMA	3196

APPLICATION STABILITY	Stable in a wide range of applications such as alcoholic, cosmetic, toiletry and household products
STORAGE CONDITIONS	Containers should be kept in a dark cool place under 5°C after purging air with nitrogen.

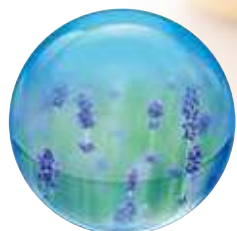


OTHER NOTES

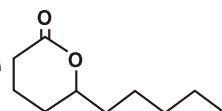
We have specific lactones as other notes such as delta-Decalactone, delta-Undecalactone, delta-Dodecalactone and the optically active delta-Decalactone which are widely used in flavor and fragrance compounds to create buttery, nutty and fruity notes.

ZEON's AROMA CHEMICALS
EMOSCENT[®]

Delta lactones are popularly used in milky, buttery and fruity flavors to create natural odors and tastes, also used in fragrances to add fruity rich notes.



delta-Decalactone



ODOR	Powerful, Creamy, Nutty, Sweet, Fruity
NATURAL OCCURRENCE	Butter, Milk, Cream, Peach, Gardenia, Tuberose
TENACITY	more than 2 weeks on a smelling blotter

PHYSICAL PROPERTIES

●Formula	C ₁₀ H ₁₈ O ₂
●Flash point	148°C (open cup)

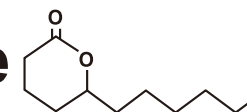
ANALYTICAL SPECIFICATIONS

●Purity (GC %)	min. 98.00%
●Specific gravity (d20/20)	0.969~0.975
●Refractive index (n20/D)	1.456~1.460
●Acid value (mg KOH/g)	max. 5.0

REGISTRATION

●TSCA,DSL,CHINA,ECL,AICS,PICCS	Listed
●EC No.	211-889-1
●FEMA	2361

delta-Undecalactone



ODOR	Fatty, Creamy, Peach-like
NATURAL OCCURRENCE	Butter, Milk, Cream
TENACITY	more than 2 weeks on a smelling blotter

PHYSICAL PROPERTIES

●Formula	C ₁₁ H ₂₀ O ₂
●Flash point	159°C (open cup)

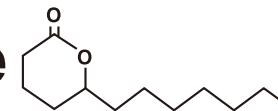
ANALYTICAL SPECIFICATIONS

●Purity (GC %)	min. 98.00%
●Specific gravity (d20/20)	0.958~0.964
●Refractive index (n20/D)	1.456~1.461
●Acid value (mg KOH/g)	max. 5.0

REGISTRATION

●TSCA,DSL,CHINA,ECL,AICS,PICCS	Listed
●EC No.	211-915-1
●FEMA	3294

delta-Dodecalactone



ODOR	Powerful, Fresh, Fruity, Milky
NATURAL OCCURRENCE	Butter, Milk, Cream, Peach, Gardenia, Tuberose
TENACITY	more than 2 weeks on a smelling blotter

PHYSICAL PROPERTIES

●Formula	C ₁₂ H ₂₂ O ₂
●Flash point	171°C (open cup)

ANALYTICAL SPECIFICATIONS

●Purity (GC %)	min. 98.00%
●Specific gravity (d20/20)	0.948~0.954
●Refractive index (n20/D)	1.457~1.462
●Acid value (mg KOH/g)	max. 5.0

REGISTRATION

●TSCA,DSL,CHINA,ECL,AICS,PICCS	Listed
●EC No.	211-932-4
●FEMA	2401

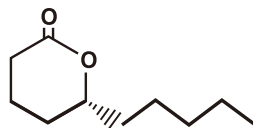
Delta LACTONES, which naturally occur in many kinds of foods, are indispensable for creating various flavor and fragrance compounds.

Many flavor and fragrance components have chiral structures, which show optical activity, and well-known that the odor quality of optically active substances is much superior to that of racemic compounds.

Zeon Corporation has successfully developed the synthetic process of manufacturing the optically active delta-Decalactone and commercially launched enantiomer, R-body. Using the optically active delta-Decalactone in compounds makes it possible to reproduce really natural flavors and fragrances that have been impossible to create only with racemic compounds.



The optically active delta-Decalactone R-80



PHYSICAL PROPERTIES

●Formula	C ₁₀ H ₁₈ O ₂
●Flash point	148°C (open cup)

ANALYTICAL SPECIFICATIONS

●Purity (GC %)	min. 98.00%
●Optical purity (ee)	80.0~83.0% ee
●Specific gravity (d ₂₀ /20)	0.969~0.975
●Refractive index (n ₂₀ /D)	1.455~1.460
●Acid value (mg KOH/g)	max. 5.0

REGISTRATION

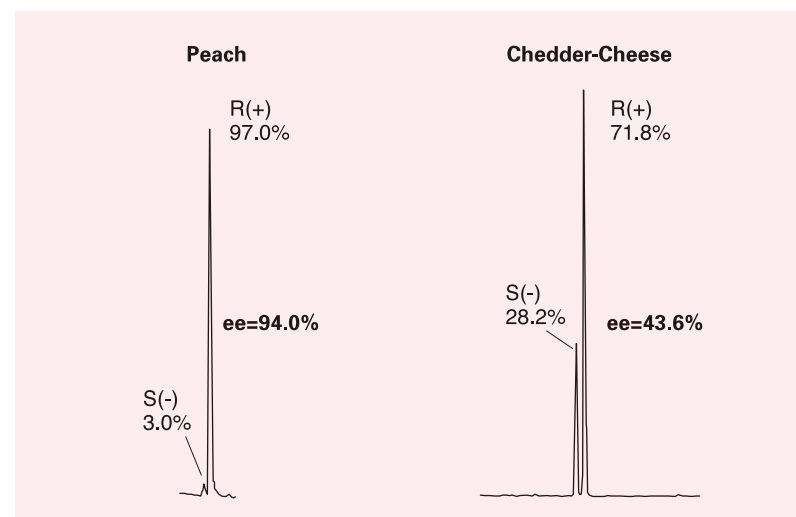
●TSCA,DSL,CHINA,ECL,AICS,PICCS	Listed
●EC No.	211-889-1
●FEMA	2361

ee : enantiomeric excess

ODOR	Natural, milky, creamy
NATURAL OCCURRENCE	R-80 Cheese, Peach
TENACITY	R-80 more than 2 weeks on a smelling blotter

Stereodifferentiation of delta-Decalactone in natural products

Food	R : S (%)
Cheddar cheese	71.8 : 28.2 (43.6%ee)
Osmanthus oil	83.8 : 16.2 (67.6%ee)
Peach	97.0 : 3.0 (94.0%ee)



*Z.Lebensm.-Unters.Forsch.(1993)196;307-328

ZEON's AROMA CHEMICALS DATA

GREEN NOTES

PRODUCT NAME	FORMULA	UN No.	TSCA,DSL,CHINA, AICS,PICCS	EC No.	FEMA		H.S. No.	ENCS (JAPAN)	SPECIFIC GRAVITY(d ₂₀ ²⁰)	REFRACTIVE INDEX(n _D ²⁰)	PURITY (GC%)	ODOR
cis-3-Hexenol (Leaf alcohol)	C ₆ H ₁₂ O	1987	Listed	213-192-8	2563		2905.29	2-2393	0.845~0.851	1.436~1.442	min. 98.00	Fresh and Natural Green, Grassy, Powerful
cis-3-Hexenyl acetate	C ₈ H ₁₄ O ₂	3272	Listed	222-960-1	3171		2915.39	2-2533	0.898~0.904	1.424~1.430	min. 98.00	Fruity, Green,Apple, Green banana-like
cis-3-Hexenyl salicylate	C ₁₃ H ₁₆ O ₃	3082	Listed	265-745-8	4750		2918.23	3-3041	1.059~1.067	1.518~1.525	min. 97.00	Floral, Green, Balsamic
cis-3-Hexenal	C ₆ H ₁₀ O	1989	Listed	229-854-4	2561		2912.19	2-520	————	————	min. 98.00	Very strong, Green Leafy, Tomato leaf-like
Leaf acetal	C ₁₀ H ₂₀ O ₂	N/A	Listed	248-817-3	3775		2911.00	2-2458	0.849~0.859	1.420~1.430	min. 98.00	Green-grassy, Violet like, Radish-like
3,6-Nonadienol	C ₉ H ₁₆ O	N/A	Listed	278-518-3	3885		2905.29	2-258	0.867~0.875	1.463~1.473	min. 97.00	Powerful, Natural, Fresh, Green, Violet leaf, Fruity, Vegetable
cis-6-Nonenol	C ₉ H ₁₆ O	N/A	Listed	252-764-1	3465		2905.29	2-258	0.846~0.854	1.444~1.456	min. 95.00	Powerful, Natural, Fresh, Fruity Green, Violet leaf, Ozone

ZEON's AROMA CHEMICALS DATA

JASMINE NOTES

PRODUCT NAME	FORMULA	UN No.	TSCA,DSL,CHINA, AICS,PICCS	EC No.	FEMA		H.S. No.	ENCS (JAPAN)	SPECIFIC GRAVITY(d ₂₀ ²⁰)	REFRACTIVE INDEX(n _D ²⁰)	PURITY (GC%)	ODOR
CLAIGEON™ (Methyl dihydrojasmonate)	C ₁₃ H ₂₂ O ₃	N/A	Listed	246-495-9	3408		2918.30	3-3309	0.999~1.007	1.456~1.462	min. 98.50	Floral, Natural Jasmine-like
CEPIONATE™ (Methyl epi-dihydrojasmonate)	C ₁₃ H ₂₂ O ₃	N/A	Listed	246-495-9	3408		2918.30	3-3309	1.000~1.008	1.456~1.462	min. 98.00 epi-30.00~35.00	Powerful, Floral, Sweet Tenacious, Slightly powdery, Diffusive, Natural Jasmine-like
Jasminlactone	C ₁₀ H ₁₆ O ₂	N/A	Listed	247-074-2	3745		2932.20	5-6352	0.995~1.007	1.473~1.479	min. 97.00	Powerful, Very natural, Oily-fruity, Tenacious, White flower petals
JASMONEIGE™ (Methyl jasmonate)	C ₁₃ H ₂₀ O ₃	N/A	Listed	254-705-5	3410		2918.30	3-3839	1.018~1.029	1.471~1.477	min. 97.00	Powerful, Floral, Sweet, Elegant, Reminiscent of Natural Jasmine petal
ZEPPIN™ (Methyl epi-jasmonate)	C ₁₃ H ₂₀ O ₃	N/A	Listed	254-705-5	3410		2918.30	3-3839	1.018~1.029	1.471~1.477	min. 97.00 epi-20.00~23.00	Very natural, Diffusive, Floral, Sweet Reminiscent of Natural Jasmine petal
cis-Jasmon	C ₁₁ H ₁₆ O	N/A	Listed	207-668-4	3196		2914.29	3-2394	0.940~0.946	1.497~1.501	min. 98.00	Diffusive, Fruity, Natural Jasmine-like, Celery seed-like

OTHER NOTES

PRODUCT NAME	FORMULA	UN No.	TSCA,DSL,CHINA, AICS,PICCS	EC No.	FEMA		H.S. No.	ENCS (JAPAN)	SPECIFIC GRAVITY(d ₂₀ ²⁰)	REFRACTIVE INDEX(n _D ²⁰)	PURITY (GC%)	ODOR
Prenyl acetate	C ₇ H ₁₂ O ₂	1993	Listed	214-730-4	4202		2915.39	2-2532	0.917~0.922	1.428~1.433	min. 98.00	Fruity, Green apple / banana-like
delta-Decalactone	C ₁₀ H ₁₆ O ₂	N/A	Listed	211-889-1	2361		2932.29	5-698	0.969~0.975	1.456~1.460	min. 98.00	Powerful, Creamy, Nutty, Sweet, Fruity
delta-Undecalactone	C ₁₁ H ₂₀ O ₂	N/A	Listed	211-915-1	3294		2932.29	5-698	0.958~0.964	1.456~1.461	min. 98.00	Fatty, Creamy, Peach-like
delta-Dodecalactone	C ₁₂ H ₂₂ O ₂	N/A	Listed	211-932-4	2401		2932.29	5-698	0.948~0.954	1.457~1.462	min. 98.00	Powerful, Fresh, Fruity, Milky
delta-Decalactone R-80	C ₁₀ H ₁₆ O ₂	N/A	Listed	211-889-1	2361		2932.29	5-698	0.969~0.975	1.455~1.460	min. 98.00 80.0~83.0% ee	Natural, Milky, Creamy



FOR MORE INFORMATION

It is our pleasure to serve customers with high quality products, technologies and the best services possible.

If you have any questions about our aroma chemicals or have any interest in further information or samples, please contact as follows;



ZEON CORPORATION Specialty Materials Division

1-6-2 Marunouchi, Chiyoda-ku, Tokyo, 100-8246, JAPAN

Tel: +81-3-3216-0542

Web Site : <https://www.zeon.co.jp/>

Disclaimers

The information contained herein is believed to be reliable, but no representations, guarantees or warranties of any kind are made as to its accuracy, suitability for particular applications or the results to be obtained therefrom.

The information is based on laboratory work with small-scale equipment and does not necessarily indicate end product performance.

Because of the variations in methods, conditions and equipment used commercially in processing these materials, no warranties or guarantees are made as to the suitability of the products for the application disclosed.

Full-scale testing and end product performance are the responsibility of the user.

Zeon Corporation shall not be liable for and the customer assumes all risk and liability of any use of handling of any material beyond Zeon Corporation direct control.

THE SELLER MAKES NO WARRANTIES, EXPRESS OR IMPLIED INCLUDING, BUT NOT LIMITED TO, THE IMPLIED WARRANTIES OF MERCHANTABILITY AND FITNESS FOR A PARTICULAR PURPOSE.

Nothing contained herein is to be considered as permission, recommendation, nor as an inducement to practice any patented invention without permission of the patent owner.





ZEON

ZEON CORPORATION

Specialty Materials Division

1-6-2 Marunouchi, Chiyoda-ku, Tokyo, 100-8246, JAPAN

Tel: +81-3-3216-0542

Web Site : <https://www.zeon.co.jp/>